

Dy-Li (Dysprosium-Lithium)

H. Okamoto

The Dy-Li phase diagram was unknown in [Massalski2]. Figure 1 shows the Dy-Li phase diagram constructed based on a schematic phase diagram and a table of invariant reaction temperatures and compositions given in [1998Gan]. Table 1 shows Dy-Li crystal structure data.

Reference

1998Gan: N.N. Ganiev, Kh.M. Nazarov, and M.D. Badalov, Interaction of Lithium with Rare-earth Metals, *Izv. Ross. Akad. Nauk, Metally*, 1998, (6), p 109-112, in Russian; TR: *Russ. Metall.*, 1998, (6), p 132-136

Table 1 Dy-Li crystal structure data

Phase	Composition, at.% Li	Pearson symbol	Space group	Strukturbericht designation	Prototype
(βDy)	0	<i>cI2</i>	<i>Im</i> $\bar{3}m$	A2	W
(αDy)	0	<i>hP2</i>	<i>P6</i> $_3/mmc$	A3	Mg
(βLi)	100	<i>cI2</i>	<i>Im</i> $\bar{3}m$	A2	W

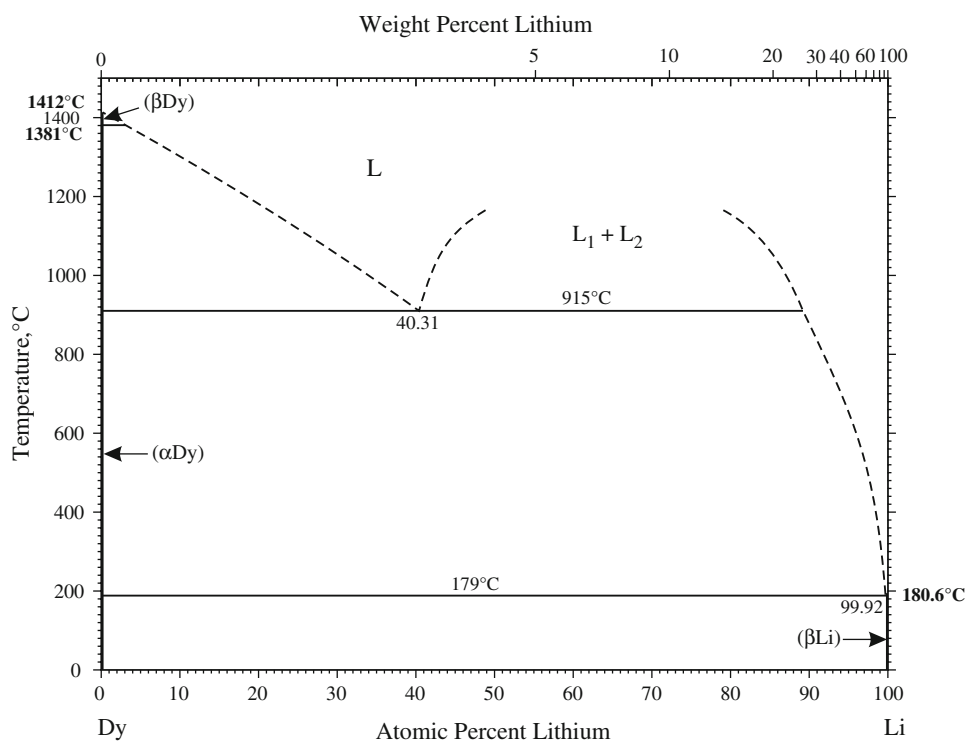


Fig. 1 Dy-Li phase diagram